

# CATALOGUE

SOLAR ENERGY | 2023

COMPLETE ENERGY SOLUTIONS FOR A BETTER TOMORROW

# V-TAC

Meaningful Innovation.



# WELCOME TO V-TAC

V-TAC was founded with the vision of providing energy-efficient LED lighting solutions worldwide.

While building a vast portfolio in LED lighting over the past years, we were also able to build expertise in innovation and expand our R&D team to offer a diversified catalogue with over 3500 products to our clients and partners all over the UK and Europe.

Utilizing our brand value and manufacturing technologies, we have been expanding our product categories beyond lighting, with one mission to improve the lives of humanity worldwide.

Now, we are moving towards promoting sustainable practices that will help citizens and businesses lower their carbon footprint, and become a global leader in providing energy efficient systems — including solar panels, inverters, battery packs, and power stations.

V-TAC Lighting

V-TAC Digital

V-TAC Audio

V-TAC Solar

V-TAC Electrical

V-TAC Smart

V-TAC Energy



## 2009

V-TAC was founded with the vision of providing energy-efficient LED lighting solutions worldwide

## 2011

Began our EU expansion by opening the first V-TAC warehouse and office in Sofia, Bulgaria

## 2013

Started building our distribution network in the UK from our office in Southall, London.

## 2015

Launched our in-house product testing lab in Sofia, Bulgaria.

## 2016

Achieved \$100M Annual Turnover- Manufacturing Joint Venture with DASHER Lighting for decorative lighting.

## 2017

In-brand partnership with Samsung. Launched the V-TAC Pro series.

## 2022

Progressed into the green energy era with our new Solar products range

## 2021

Centralized warehouse in Bulgaria extended to 42000+ sq mts.

## 2020

- New website launch
- Opened new office in Ireland.

## 2019

Opened new office in Poland.

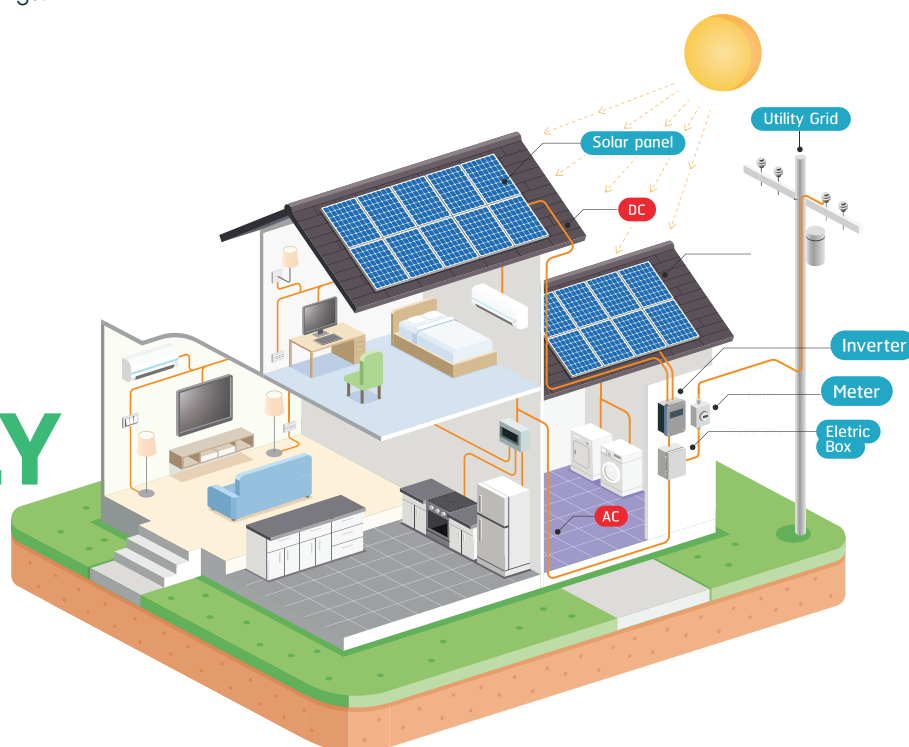
## 2018

- Partnership with Tuya and launched new Smart Series
- Unveiled the new V-TAC Showroom in Slough, UK

Solar energy is energy derived from sunlight. Whether you realise it or not, the sun already powers our planet, providing the necessary energy to keep the Earth's ecosystem alive and thriving. The amount of sunlight that reaches the earth's atmosphere is enough to power all our needs.

According to the US Department of Energy, 173000 terawatts of solar energy strike the earth continuously, which is more than 10000 times the world's total energy use. The sun is a free, sustainable, clean resource we can utilise in place of conventional electricity to power our day-to-day lives. Solar energy can be used to provide heat, light, and other electricity-dependent needs in residential and commercial buildings.

# HOW DO SOLAR PANELS ACTUALLY WORK?



Solar panels are made of highly excitable, conductive materials. When the sun's rays hit the solar panels, the reaction creates direct current (DC) electricity. Do they work even on overcast days? Absolutely, since the sun's rays can still penetrate clouds and reach solar panels.

Since most homes and businesses use alternating current (AC) electricity, your solar-generated DC energy will pass through an inverter to become AC electricity. This energy can be rationed into load for everyday essential appliance use, the rest stored into a battery, reverted back into a grid — entirely dependent on your choice and solar power system goals.

Solar panels enable humanity to maximise solar energy — a free, clean, energy resource. This is a major step in lowering carbon footprint and eventually achieving net-zero. V-TAC's new Energy catalogue aims to promote clean energy access with energy supplies at the best prices, and contributing to economic growth by pushing for energy savings.



# WHY SOLAR ENERGY IS IMPORTANT?

There's a reason why so many homeowners and businesses are turning to solar power. The benefits are undeniable, and not just for individuals, but for the planet as a whole. Here are just a few of the many reasons that support the importance of solar energy.

## IT'S GOOD FOR THE ENVIRONMENT

The difference between solar energy and conventional electricity is that solar energy does not rely on the use of fossil fuels, does not pollute air or water, and does not contribute to global warming, making it the preferable option for many. Solar energy works with the earth's natural resources, whereas conventional electricity depletes or harms them.

## IT'S A RELIABLE, COST-EFFECTIVE ENERGY SOURCE

The sun is a renewable energy source. Fossil fuels will eventually run out, but sunlight won't. For that reason, solar energy is highly reliable. And unlike fossil fuels which are expensive to mine and utilize, it doesn't cost anything to receive sunlight. A one-time installation of solar equipment is all that's needed to reap the benefits.

## IT SAVES YOU MONEY IN THE LONG RUN

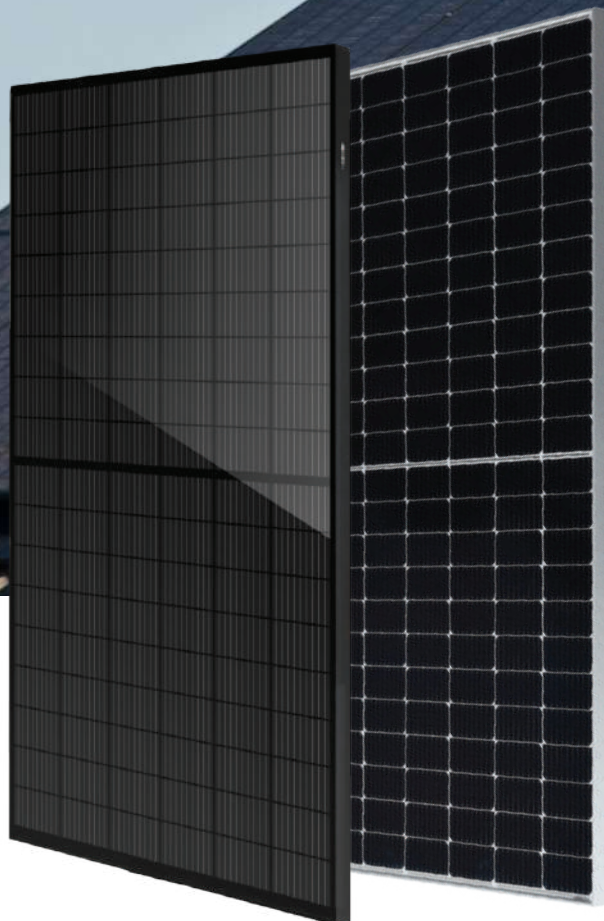
Though the cost of installing solar panels or a solar electric system has decreased in recent years, some may still find the initial investment in solar energy to be intimidating. However, the key is remembering that installation is a one-time event, whereas paying for conventional electricity is a frequent, ongoing, and an expensive obligation, especially as electric rates continue to rise.

## IT PROMOTES ENERGY INDEPENDENCE

Energy independence means not having to rely on the power grid. With no other means of powering your home, you could run into a variety of issues in the event of bad weather or damage to power lines. Using solar energy, especially when paired with a backup battery system, allows you to not be tied to unreliable power grids when you need energy most.



# Solar Panels



UP TO  
**12** YEAR  
WARRANTY  
PRODUCT MATERIAL  
AND WORKMANSHIP

**25** YEAR  
WARRANTY  
LINEAR POWER  
OUTPUT

V-TAC Solar Panels are engineered for a positive power tolerance, ensuring that they will always produce more power, equal to or greater than their rated power.

PID Resistance means our solar panels maintain their power efficiency despite high voltages, high temperatures, high humidity, and other potential factors. With advanced glass and cell surface textured design, excellent performance even during overcast days is possible. The 25-year Linear Output Warranty to guarantees that optimal power output will still be achieved even after decades of installation.



#### HALF-CUT TECHNOLOGY

Unique circuit design to reduce temperature heat spots



#### SIGNIFICANTLY AVOIDING HEAT SPOT

The unique circuit design to reduce the temperature heat spot significantly, so that to reduce the power loss and then increase the output of modules.



#### LOWER COST

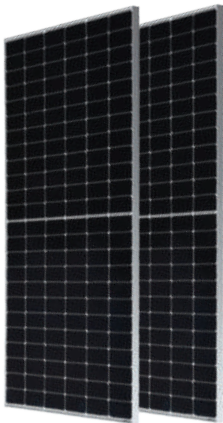
Increasing power generation can reduce the cost per kilowatt-hour



#### EXCELLENT PERFORMANCE OF PID RESISTANCE

The performance of PID resistance (Potential Induced Degradation) passed the standard of TUV Nord.





**SILVER FRAME  
SOLAR PANEL**

**410W**

VT-410  
SKU 11518

**1 meter**

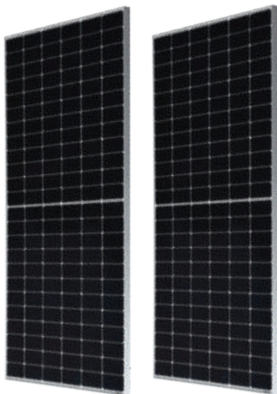
CABLE

**MECHANICAL CHARACTERISTICS**

Cell Type	182*91 Mono
No. of Cells	108 (12*9)
Dimensions	D:1722*1134*35mm
Weight	21.50kg
Junction box	IP67/IP68 3diodes
Operating Temperature	-40~+85°C
Qty Per Pallet	31pcs/pallet

**ELECTRICAL DATA (STC)**

Peak Power(Pmax)	410.00
Maximum Power Voltage(Vmp)	31.46
Maximum Power Current(Imp)	13.04
Open Circuit Voltage(Voc)	37.45±3%
Short Circuit Current(Isc)	13.85±3%
Module Efficiency( % )	20.97



**SILVER FRAME  
SOLAR PANEL**

**410W**

VT-410  
SKU 11517

**1 meter**

CABLE

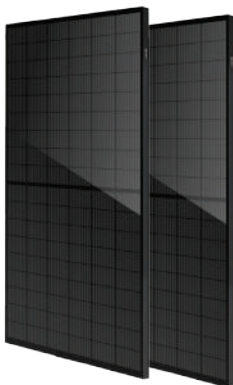
**SLIM DESIGN**

**MECHANICAL CHARACTERISTICS**

Cell Type	182*91 Mono
No. of Cells	108 (12*9)
Dimensions	D:1722*1134*30mm
Weight	21.50kg
Junction box	IP67/IP68 3diodes
Operating Temperature	-40~+85°C
Qty Per Pallet	37pcs/pallet

**ELECTRICAL DATA (STC)**

Peak Power(Pmax)	410.00
Maximum Power Voltage(Vmp)	31.46
Maximum Power Current(Imp)	13.04
Open Circuit Voltage(Voc)	37.45±3%
Short Circuit Current(Isc)	13.85±3%
Module Efficiency( % )	20.97



**BLACK  
SOLAR PANEL**

**410W**

VT-410  
SKU 11519

**1 meter**

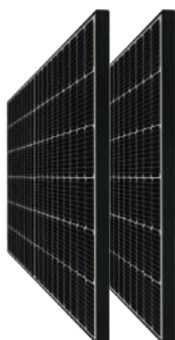
CABLE

**MECHANICAL CHARACTERISTICS**

Cell Type	182*91 Mono
No. of Cells	108 (12*9)
Dimensions	D:1722*1134*35mm
Weight	21.50kg
Junction box	IP67/IP68 3diodes
Operating Temperature	-40~+85°C
Qty Per Pallet	31pcs/pallet

**ELECTRICAL DATA (STC)**

Peak Power(Pmax)	410.00
Maximum Power Voltage(Vmp)	31.46
Maximum Power Current(Imp)	13.04
Open Circuit Voltage(Voc)	37.45±3%
Short Circuit Current(Isc)	13.85±3%
Module Efficiency( % )	20.97



**BLACK FRAME  
SOLAR PANEL**

**410W**

VT-410  
SKU 11561

**1 meter**

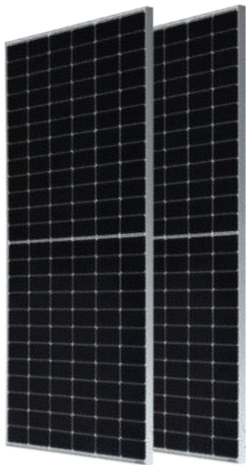
CABLE

**MECHANICAL CHARACTERISTICS**

Cell Type	182*91 Mono
No. of Cells	108 (12*9)
Dimensions	D:1722*1134*35mm
Weight	21.50kg
Junction box	IP67/IP68 3diodes
Operating Temperature	-40~+85°C
Qty Per Pallet	31pcs/pallet

**ELECTRICAL DATA (STC)**

Peak Power(Pmax)	410.00
Maximum Power Voltage(Vmp)	31.46
Maximum Power Current(Imp)	13.04
Open Circuit Voltage(Voc)	37.45±3%
Short Circuit Current(Isc)	13.85±3%
Module Efficiency( % )	20.97



## 450W

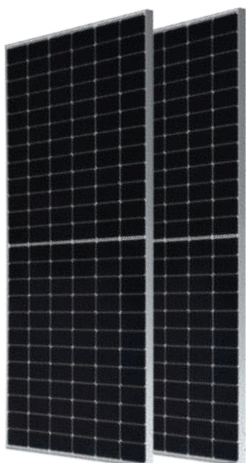
VT-450W  
SKU 11353

### MECHANICAL CHARACTERISTICS

Cell Type	166*83 Mono
No. of Cells	144 (12*12)
Dimensions	2094*1038*35mm
Weight	23.50kg
Junction box	IP67/IP68 3diodes
Operating Temperature	-40~+85°C
Qty Per Pallet	31pcs/pallet

### ELECTRICAL DATA (STC)

Peak Power(Pmax)	450.00
Maximum Power Voltage(Vmp)	41.50
Maximum Power Current(Imp)	10.85
Open Circuit Voltage(Voc)	49.30±3%
Short Circuit Current(Isc)	11.60±3%
Module Efficiency( % )	20.70



## 545W

VT-545W  
SKU 11354

### MECHANICAL CHARACTERISTICS

Cell Type	182*91 Mono
No. of Cells	144 (12*12)
Dimensions	2279*1134*35mm
Weight	28.40kg
Junction box	IP67/IP68 3diodes
Operating Temperature	-40~+85°C
Qty Per Pallet	31pcs/pallet

### ELECTRICAL DATA (STC)

Peak Power(Pmax)	545.00
Maximum Power Voltage(Vmp)	41.93
Maximum Power Current(Imp)	13.00
Open Circuit Voltage(Voc)	49.90±3%
Short Circuit Current(Isc)	13.92±3%
Module Efficiency( % )	21.08



## 665W

VT-665W  
SKU 11544

### MECHANICAL CHARACTERISTICS

Cell Type	210*105 Mono
No. of Cells	132 (12*11)
Dimensions	2384*1303*35mm
Weight	33.90kg
Junction box	IP67/IP68 3diodes
Operating Temperature	-40~+85°C
Qty Per Pallet	31pcs/pallet

### ELECTRICAL DATA (STC)

Peak Power(Pmax)	665.00
Maximum Power Voltage(Vmp)	38.00
Maximum Power Current(Imp)	17.50
Open Circuit Voltage(Voc)	45.80±3%
Short Circuit Current(Isc)	18.58±3%
Module Efficiency( % )	21.40



# Solar Panels Sets



V-TAC launches an innovative way to transport our solar panel range: with the usage of especially packed solar panel sets. The sets were designed with homes and small industrial projects in mind, providing a limited number of panels to match customers' requirements. Our state-of-the-art 410W and 450W panels are packed methodically in mini pallets, which can then be easily transported directly on site to provide the exact power and energy required.



4.92 kW/SET

**410W X 12**

Half Mono Solar Panel  
Black Frame  
D:1722\*1134\*35MM

SKU 11562

**1 meter**

CABLE



**SLIM DESIGN**

4.92 kW/SET

**410W X 12**

Slim Half Mono Solar Panel  
D:1722\*1134\*30MM

SKU 11549

**1 meter**

CABLE



4.92 kW/SET

**410W X 12**

Half Mono Solar Panel  
D:1722\*1134\*35MM

SKU 11550

**1 meter**

CABLE



4.95 kW/SET

**450W X 11**

Half Mono Solar Panel  
D:2094\*1038\*35MM

SKU 11553



**6.15 kW/SET**  
**410W X 15**

Half Mono Solar Panel  
Black Frame  
D:1722\*1134\*35MM

SKU 11563

**1 meter**

CABLE



**SLIM DESIGN**

**6.15 kW/SET**  
**410W X 15**

Slim Half Mono Solar Panel  
D:1722\*1134\*30MM

SKU 11551

**1 meter**

CABLE



**6.15 kW/SET**  
**410W X 15**

Half Mono Solar Panel  
D:1722\*1134\*35MM

SKU 11552

**1 meter**

CABLE



**6.30 kW/SET**  
**450W X 14**

Half Mono Solar Panel  
D:2094\*1038\*35MM

SKU 11554

# Solar Inverters



Solar Inverters are devices that convert the direct current (DC) from the solar panels into alternating current (AC) which is used by domestic and commercial appliances. It is one of the most critical components of the solar power system as it converts power from the sun into useful energy and is often referred to as the brain of a solar system. Solar inverters are a crucial part of a solar system since power from the sun cannot be directly used to run electrical appliances. V-TAC's range of solar inverters have evolved to become much more smart and intelligent units, performing other functions such as data monitoring, advanced utility controls, energy management, and more.

## Single Phase

## On-Grid Solar Inverters

Typically used in most new houses and small businesses, single-phase on-grid inverters transport electricity via two wires: active and neutral. The electricity from the grid or your solar PV system will only flow through the one active wire, while the neutral wire is connected to the earth at the switchboard. This setup allows you to generate solar power from panels as well as draw power in from the grid to power your homes or offices.



**5kW**

VT-6605105  
SKU 11370

**05** YEAR  
WARRANTY

Number of MPP Trackers	2
String per MPPT	1



**5kW**

VT-6605110  
SKU 11380

**10** YEAR  
WARRANTY

Number of MPP Trackers	2
String per MPPT	1



Zero export function  
(Optional)



External  
Inductor



Aluminum  
Enclosure



Natural cooling,  
low noise



IP65  
Rating

## Three Phase

## On-Grid Solar Inverters

Three-phase power has four wires, three of which are active, in addition to one neutral wire, which is earthed at the switchboard. Three phase electricity is common in both larger homes and businesses, as well as older homes, and allows for smaller and less expensive wiring, and lower voltages.



**5kW**

VT-6605305  
SKU 11371

**8kW**

VT-6608305  
SKU 11372

**10kW**

VT-6610305  
SKU 11373

Number of MPP Trackers	2
String per MPPT	1

**05** YEAR  
WARRANTY



Zero export function  
(Optional)



External  
Inductor



Aluminum  
enclosure



Natural cooling,  
low noise



IP65  
rating

## Three Phase

## On-Grid Solar Inverters



**10** YEAR WARRANTY

**5kW**

VT-6605310  
SKU 11381

**8kW**

VT-6608310  
SKU 11382

**10kW**

VT-6610310  
SKU 11383

Number of MPP Trackers	2
String per MPPT	1

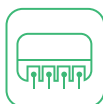


**10** YEAR WARRANTY

**30kW**

VT-6630305  
SKU 11507

Number of MPP Trackers	3
String per MPPT	2



Multi MPP trackers



160% DC Input oversizing



Smart I-V curve diagnosis supported



DC&AC type II SPD



Intelligent fault detection



AFCI function (Optional)



IP66 rating



**10** YEAR WARRANTY

**50kW**

VT-6607150  
SKU 11521

Number of MPP Trackers	4
String per MPPT	3 / 2 / 3 / 2



**10** YEAR WARRANTY

**100kW**

VT-6607100  
SKU 11520

Number of MPP Trackers	9
String per MPPT	2

## Single Phase

## Hybrid Solar Inverters

Hybrid inverters allows you to generate solar power from panels, draw power from the grid and store excess energy created by the panels into battery packs to be drawn in whenever necessary. The electricity from the grid, solar PV system or the battery will only flow through the one active wire, while the neutral wire is connected to the earth at the switchboard.



**5kW**

VT-6607103  
SKU 11508/11509

**05** YEAR  
WARRANTY

Number of MPP Trackers	2
String per MPPT	1



Lead-acid/ lithium  
Battery



Smart energy  
management



Battery reverse  
protection



IP66  
rating



Zero export  
function  
(Integrated)



## Single Phase

## Hybrid Solar Inverters



**5kW**

VT-6605103  
SKU 11376

**03** YEAR  
WARRANTY

Number of MPP Trackers	2
String per MPPT	1



High DC/AC ratio



Battery capacity from 2.4 to 14.4kW.h



User friendly HMI



Easy to install



Support battery customization



**6kW**

VT-6607106  
SKU 11514

**05** YEAR  
WARRANTY

Number of MPP Trackers	2
String per MPPT	1



UPS function switch time < 10ms



PV oversize 1.5 times pv oversize



MPPT channels up to 2 MPPT channels



Multiple inputs support generator & wind turbines

## Single Phase

## Hybrid Solar Inverters



**5kW**

SKU 11547

**6kW**

SKU 11537

**05** YEAR  
WARRANTY

**6kW**  
ITALIAN  
SPECIFICATION  
SKU 11529

Number of MPP Trackers	2
String per MPPT	1



Colorful touch LCD, IP65 protection degree

**135**

Max. charging/discharging current of 135A



DC couple and AC couple to retrofit existing solar system

**6**

6 time periods for battery charging/discharging

**16**

Max. 16pcs parallel for on-grid and off-grid operation; Support multiple batteries parallel

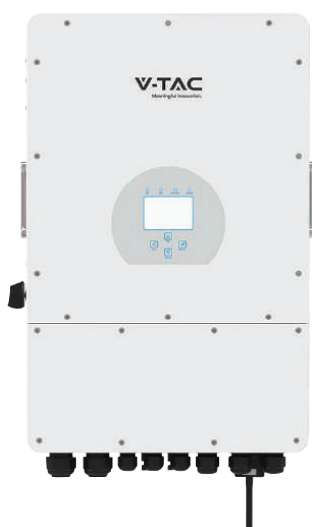


Support storing energy from diesel generator

## Three Phase

## Hybrid Solar Inverters

Three-phase power has four wires, three of which are active, in addition to one neutral wire, which is earthed at the switchboard. Three phase electricity is common in both larger homes and businesses, as well as older homes, and allows for smaller and less expensive wiring, and lower voltages.

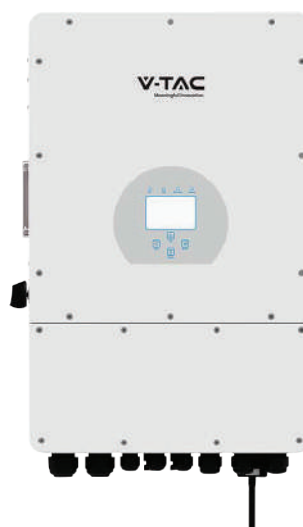


**10kW**

SKU 11542

**05 YEAR WARRANTY**

Number of MPP Trackers	2
String per MPPT	2+1



**12kW**

SKU 11543

**05 YEAR WARRANTY**

Number of MPP Trackers	2
String per MPPT	2+1



Colorful touch LCD, IP65 protection degree



Max. charging/discharging current of 240A



DC couple and AC couple to retrofit existing solar system



6 time periods for battery charging/discharging



Max. 10pcs parallel for on-grid and off-grid operation; supports multiple parallel batteries



Support storing energy from diesel generator



48V low voltage battery, transformer isolation design



100% unbalanced output

# Battery Storage Solutions



Having batteries in your solar power system gives you more energy self-sufficiency, and helps you achieve your ROI. We offer different types of safe, reliable battery solutions to meet power storage needs depending on a variety of factors — the solar array size, on-grid or off-grid system, backup power requirements, and overnight energy consumption in kWh. Our batteries are modular and scalable to easily build your target load with each usable capacity. IP65 options are available for a weatherproof performance all year round.

## Rack Mounting

## Lithium Battery



**5.12kWh**

VT-48100E-P2  
SKU 11377

**05** YEAR  
WARRANTY

**51.2V**  
VOLTAGE



**Perfect compatibility & expandability**



**High performance & efficiency**



**Easy installation**



**Long-life lithium Battery**



**9.60kWh**

VT-48200B  
SKU 11523

**05** YEAR  
WARRANTY

**48.0V**  
VOLTAGE

## Indoor

# Wall Mounting Batteries



**5.12kWh**

VT48100E-W  
SKU 11526

**05** YEAR  
WARRANTY

**51.2V**  
VOLTAGE



**5kWh**

AT48-100H  
LiFePO4 Battery Pack

VT-5139  
KU: 11448

**05** YEAR  
WARRANTY

**48V**  
VOLTAGE



**10kWh**

AT48-200H  
LiFePO4 Battery Pack

VT-12040  
SKU: 11447

**05** YEAR  
WARRANTY

**48V**  
VOLTAGE

## Weatherproof

## Wall Mounting

## Batteries



**5.12kWh**

VT-48100-W2  
SKU 11524

**05** YEAR  
WARRANTY

**51.2V**

VOLTAGE



**14.33kWh**

VT-48280-W2  
SKU 11525

**05** YEAR  
WARRANTY

**51.2V**

VOLTAGE



**Intelligent BMS monitoring for all-round protection**



**Overcurrent protection**



**A-grade LFP cells, ensuring safety of the battery**



**In-built App to monitor and track battery capacity**



**6000 cycle lifespan with a 10 year warranty**

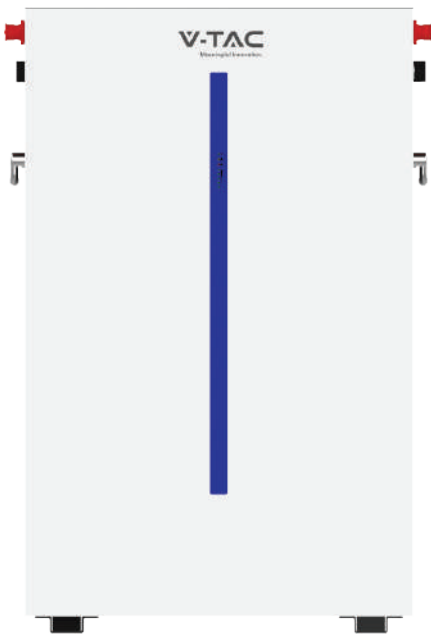


**Easy installation with wall-mounted latches**

## Weatherproof

## Wall Mounting

## Batteries



**CEI 0-21**  
Certificate

**6.14kWh**

SKU 11539

**05** YEAR  
WARRANTY

**51.2V**

VOLTAGE

- **Safer**

Cobalt Free Lithium Iron Phosphate (LFP) Battery, safety and long lifespan, high efficiency and high-power density. Intelligent BMS, providing complete protection.

- **Reliable**

Support high discharge power. IP65, natural cooling, wide temperature range: -20°C to 55°C.

- **Flexible**

Modular design, easy to expand, Max. 32 units in parallel, Max. capacity of 196kWh. Suited to residential and commercial applications for increasing the self-consumption ratio.

- **Convenient**

Battery module auto networking, Automatic IP addressing, easy maintenance, remotely monitoring and upgrade, support USB drive upgrade the firmware.

- **Eco-Friendly**

Use environmental protection materials, the whole module non-toxic, pollution-free.

- **Wall-Mounted**

Flat design, wall-mounted, saving installation space.



Waterproof

Wall Mounting

Batteries

**48.0V**

VOLTAGE

**7.64kWh**

VT-48160  
SKU 11548

**05** YEAR  
WARRANTY



	General Parameters	Additional Information
Combination method	15S1P	LiFePO4
Rated capacity	Typical 161Ah minimum 158Ah	0.2°C,@25°C
Rated voltage	48V	
Voltage at end of discharge	42V	Discharge Cut-off voltage
Standard charge current	32A	Charge time : Approx 6h
Limiting current	20A	Software opening

# Solar System



We are dedicated to helping you shift to clean energy — our solar system kits are designed so anyone can easily jumpstart their journey to having a sustainable, solar power system. On-grid and hybrid options are available, so you can either keep your local electric connection or live off-the-grid at your choice. Whether residential, commercial, or industrial, we offer complete solar systems to meet your power needs at your specifications.

## Hybrid

# Solar System 4.92 kWp



LiFePO4 Battery

Hybrid Inverter

Half Mono Solar Panels

SKU	Product	Specification	Quantity
11549	Half Mono Solar Panel	410W with 1 meter cable	12
11547	Single Phase Hybrid Solar Inverter	5kW	1
11448	LiFePO4 Battery Pack	AT48-100H	1
	Assorted Accessories		

Whether it is installed on a roof or in a remote location, this 5kW Complete Solar Panel System Kit with Battery and Inverter can be easily connected to any electrical system. PV systems generate electricity during the day, which is initially supplied to loads. Hybrid Inverters will then charge the battery with the excess energy. Lastly, the stored energy can be released when needed.

## Hybrid

### Solar System

9.97 kWp



LiFePO4 Battery

Hybrid Inverter

Half Mono Solar Panels

SKU	Product	Specification	Quantity
11549	Half Mono Solar Panel	410W with 1 meter cable	24
11542	Three Phase Hybrid Solar Inverter	10kW	1
11447	LiFePO4 Battery Pack	AT48-200H	1
	Assorted Accessories		

With a 10kW solar system, businesses, manufacturing facilities, and offices can operate independently without relying on government power. PV systems generate electricity during the day, which is initially supplied to loads. Hybrid Inverters will then charge the battery with the excess energy. Lastly, the stored energy can be released when needed.

## On-grid

### Solar System

4.92 kWp



Solar Inverter

Half Mono Solar Panels

SKU	Product	Specification	Quantity
11549	Half Mono Solar Panel	410W with 1 meter cable	12
11370	Single Phase On-Grid Solar Inverter	5kW	1
Assorted Accessories			

On-Grid PV systems are those that utilize utility (grid) power - whether for utility, commercial, residential or stand-alone buildings. On-grid systems are designed to partially or entirely satisfy a user's energy needs, thereby offsetting utility grid energy demand.

# Light Industrial Solar System



Three Phase On Grid/ Off Grid  
Solar Inverter

**8kW**  
VT-6608303  
SKU 11375

**03** YEAR  
WARRANTY



Lead-acid/ Lithium  
battery



Battery reverse  
protection



IP66  
rating



Smart energy  
management



Zero export  
function  
(Integrated)



Smart ESS Solution

**20kWh**  
VT-204100B-W  
SKU 11527

**05** YEAR  
WARRANTY



Intelligent BMS  
monitoring for  
all-round protection



Overcurrent  
protection



A-grade LFP cells,  
ensuring safety of  
the battery



In-built App to  
monitor and track  
battery capacity



6000 cycle lifespan  
with a 10 year  
warranty



Easy installation with  
wall-mounted  
latches

## Compatible with all V-TAC Solar Systems

END CLAMP 35MM  
SKU: 11388



MIDDLE CLAMP 35MM  
SKU: 11389



SILVER RAIL  
1.2 METER SKU: 11390  
2 METERS SKU: 11538



ROOFTOP HOOK-01  
SKU: 11391



L FEET GROUP  
SKU: 11583



STEEL HORSE-SHAPED  
KLIPLOCK01 SET  
SKU: 11584



STEEL HORSE-SHAPED  
KLIPLOCK02 SET  
SKU: 11585



TT-NUT  
SKU: 11392



SPLICE FOR RAIL  
SKU: 11394



GROUNDING PLATE  
SKU: 11395



ADJUSTABLE  
FRONT LEG  
SKU: 11417



ADJUSTABLE REAR LEG  
(10°-15°) SKU: 11385  
(15°-30°) SKU: 11386



PV CABLE  
CONNECTOR-MC4  
SKU: 11413



TRIANGLE  
SUPPORT-1700  
SKU: 11387



PV CABLE 100M  
4 SQUARE - SKU: 11414 BLACK  
4 SQUARE - SKU: 11418 RED  
6 SQUARE - SKU: 11415 BLACK  
6 SQUARE - SKU: 11419 RED



PV6 CABLE WITH MC4  
CONNECTORS 2 END  
FOR SOLAR PANEL  
CONNECTION  
1 METER SKU: 11570  
2.5 METERS SKU: 11416



WIFI DONGLE  
FOR INVERTERS  
SKU 11528  
SKU 11378



STORAGE BATTERY RACK  
MAX 5 LAYERS  
SKU 11556  
Size: 558\*500\*160mm  
Adapting Battery-VT48100E-P2



STORAGE BATTERY RACK  
MAX 3 LAYERS  
SKU 11557  
Size: 598\*589\*260mm  
Adapting Battery-VT48200B



### SINGLE PHASE SMART METER

SKU: 11545



Nominal voltage	220V, 230, 240V
Current	5(80) A
Reference frequency	50Hz or 60Hz
Accuracy	Class 1.0
Operating range	0.85Un ~ 1.15Un
Power consumption	Voltage loop: ≤1W/5VA; Current loop: ≤2VA

### THREE PHASE SMART METER

SKU: 11546



Nominal voltage	3x220~240/380~415V; 3x120~138/208~240V
Current	Direct access: 5(80)A; Mutual access: 1.5(6)A
Reference frequency	50Hz or 60Hz
Accuracy	Class 1.0 for 5(80)A; Class 0.5 for 1.5(6)A
Operating range	0.85Un ~ 1.15Un
Power consumption	≤1W/8VA

# Portable Power

# Solutions



## Travel

Stay powered and connected. Charge your devices anywhere — less time worrying about running low on battery and more time enjoying your trip.



Drone



Camera



Laptop



## Leisure

New spot for your hobbies? Or just a new space for the family to hang out in? Power up your new space of comfort and fun.



Fan



Electric Grill



Mini Cooler



## Home

Say goodbye to the inconvenience of sudden outages — power up your basic home appliances whenever you need them. Also perfect for those working in flexible setups.



Printer



Blender



Mobile



## Professional

Ideal for power tools, workshops, renovations, construction, outdoor house cleaning, and outdoor events.



Drill



Chainsaw



Tools



# Portable Power Solutions

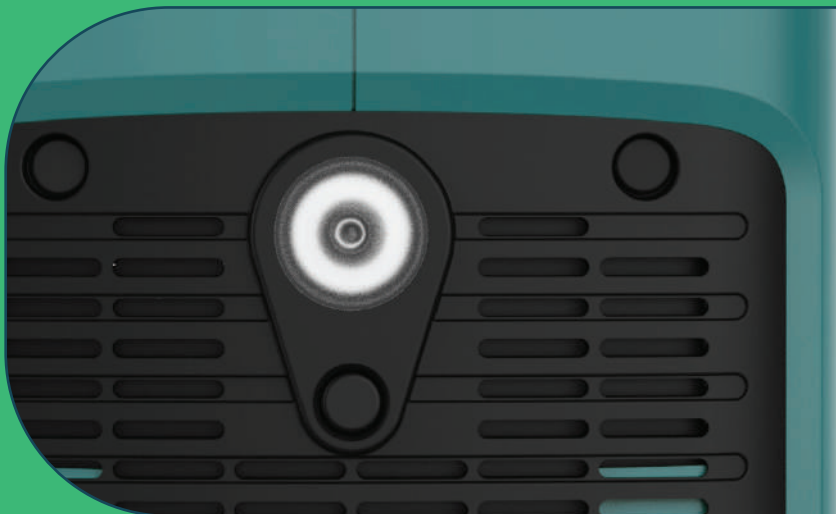
## High Capacity Power

High-performance, high safety and high power lithium iron phosphate cell



## LED Light For Camping

A must-have tool when camping or attending outdoor events



## Wireless & Faster Charge

Charging wirelessly and supporting QC3.0 quick charging





**300W**

VT-303  
SKU 11441

**AUXILIARY  
CHARGE OUTPUT**

**AC  
OUTPUT  
HIGH EFFICIENCY**

**POWER  
DELIVERY  
QC 3.0  
18W**



**500W**

VT-606  
SKU 11442



**1000W**

VT-1001  
SKU 11443



**2000W**

VT-2002  
SKU 11445

**MPPT**

Solar energy charging  
maximum power  
point tracking



**SUITCASE  
DESIGN**

A trolley-shaped design  
makes it easy to carry  
wherever you go

**AUXILIARY  
CHARGE OUTPUT**

**AC  
OUTPUT  
HIGH EFFICIENCY**

**POWER  
DELIVERY  
QC 3.0  
18W**

**LED  
LIGHT  
500 LM**

**WIRELESS  
CHARGE OUTPUT  
15W**

# Flexible & Folding Solar Panels

Compatible with all Portable Power Stations



## Flexible Solar Panels

### 100W

VT-10100  
SKU 11568

Power 100W  
Size: 980\*586\*2.7mm  
Working voltage 17V  
Working current 5.88A

• **Portable, Foldable, and Adjustable**  
Designed with an adjustable kickstand, seamlessly install the panels and get the best angle while solar charging. When you're done charging, just fold the panels and bring them everywhere you go.

• **Built to Last**  
Designed to withstand scratches and poor weather, the ultra-durable solar panels are ideal for the outdoors and come in handy during power outages.

### 210W

VT-10210  
SKU 11569

Power 210W  
Size 1035\*1035\*2.7mm  
Working voltage 20.5V,  
Working current 10.24A,



Portable power supply 2in1  
SKU 11573

**03** YEAR  
WARRANTY



## Folding Solar Panels

**02** YEAR  
WARRANTY

### 80W

VT-10080  
SKU 11564

Battery type Monocrystalline solar cells  
Folding method 1\*4 fold  
Folded size 366\*356\*54mm±5mm  
Expanded Size 1670\*356\*25mm±5mm  
Weight (NW) 4.3KG±0.5KG  
Standard working Voltage 17.6V  
Standard Working Current 4.54A

### 120W

VT-10120  
SKU 11446

Battery type Monocrystalline solar cells  
Folding method 1\*4 fold  
Folded size 430\*540\*54mm±5mm  
Expanded Size 1930\*430\*25mm±5mm  
Weight (NW) 4.0KG±0.3Kg  
Standard working Voltage 17.6V  
Standard Working Current 6.36A

### 120x2W

VT-10241  
SKU 11565 **With 2in1 Cable**

Battery type Monocrystalline solar cells  
Folding method 1\*4 fold x 2pieces  
Folded size 430\*540\*54mm±5mm  
Expanded Size 1930\*430\*25mm±5mm  
Weight (NW) 4.0KG±0.3Kg  
Standard working Voltage 17.6V  
Standard Working Current 12.72

### 160W

VT-10160  
SKU 11566 **With 2in1 Cable**

Battery type Monocrystalline solar cells  
Folding method 1\*4 fold  
Folded size 680\*468\*54mm±5mm  
Expanded Size 1670\*680\*25mm±5mm  
Weight (NW) 6KG±0.5KG  
Standard working Voltage 17.6V  
Standard Working Current 9.08A

#### Sofia Office

V-TAC Europe Ltd  
41, bul. Rozhen  
1271 Sofia  
Bulgaria  
[www.v-tac.eu](http://www.v-tac.eu)  
[office@v-tac.eu](mailto:office@v-tac.eu)

#### UK Office

V-TAC House, Kelpatrick Road,  
Slough, Berkshire, SL1 6BW, UK.  
[www.v-tac.co.uk](http://www.v-tac.co.uk)  
[info@v-tac.co.uk](mailto:info@v-tac.co.uk)

#### Hungary Office

Népfürdő utca 13. | H-1138  
Budapest, Ungarn

#### Romania Office

Bulevardul Unirii, numărul 33  
(vis-a-vis de Institutul Bancar Român),  
București

#### Poland Office

V-TAC POLAND sp. z o.o.  
Ul. Obornicka 330  
60-689 Poznań

#### Middle East Office

Unit# 407/8/9 Jumeirah Bay Towers,  
Plot# X3, JLT,P.O. Box 45244, Dubai

#### V-TAC West Europe

Ground Floor, 71 Lower Baggot  
Street, Dublin 02, Ireland  
D02 P593

# V-TAC

Meaningful Innovation.

COMPLETE ENERGY SOLUTIONS FOR A BETTER TOMORROW